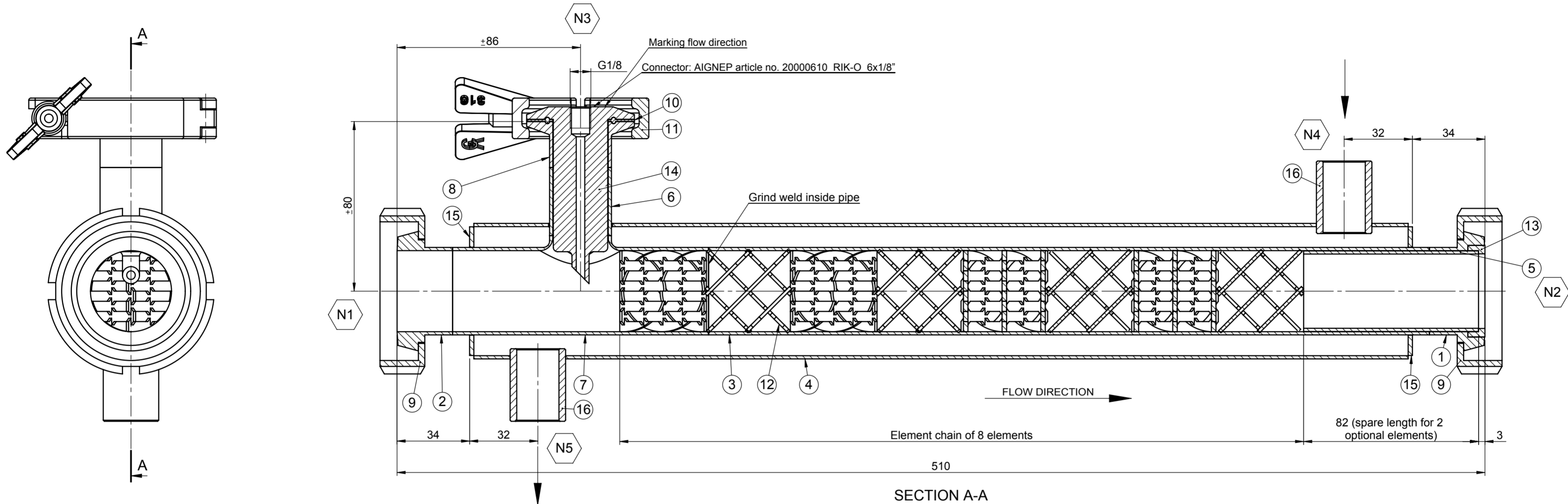
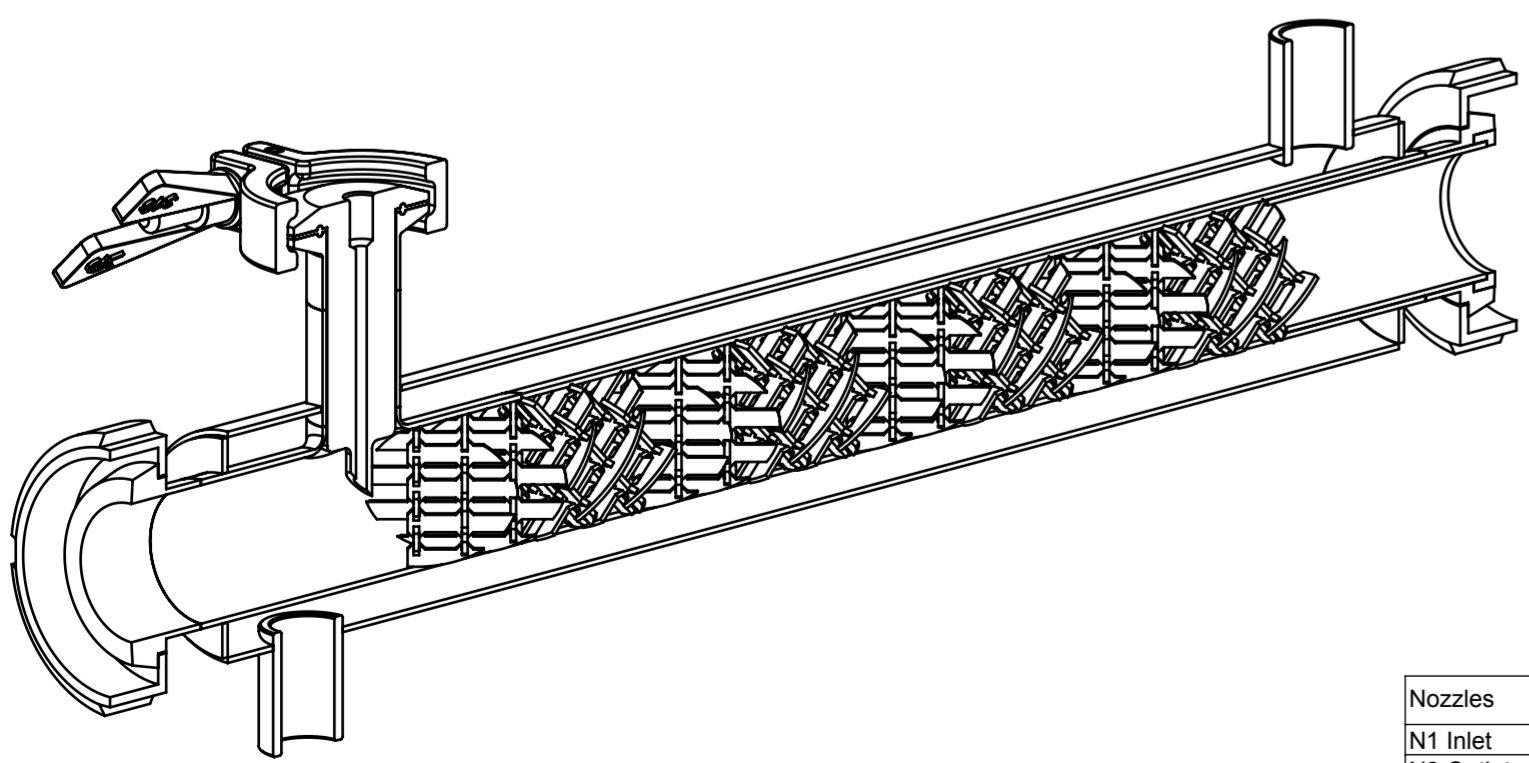


1 GENERAL		2 NON DESTRUCTIVE EXAMINATION			3		4 TREATMENT		5 DESIGN PROPERTIES			7 REVISIONS			8		
DESCRIPTION	VALUE	DESCRIPTION	YES/NO	VALUE	STANDARD	DESCRIPTION	YES/NO	VALUE	DESCRIPTION	VALUE	DESCRIPTION	VALUE	REV.	DESCRIPTION	DATE	DRAWN	APPROVED
Item number	-	Hydrostatic pressure test (HPT)	No	- [bar(g)]		Preheat	No		Design code	Man. std.	Design pressure (min./max.)	0 / 3 [bar(g)]	0	For approval	31-1-2011	MS	RJW
Serial number	-	Radiographic test (RT)	No	- [%]		Post Weld Heat Treatment (PWHT)	No		Applicable piping class	N/A	Minimum design metal temp. (MDMT)	1 [°C]					
Quantity required	3	Dye penetrant test (PT)	No	- [%]		Electro polishing	Yes	Only mixer elements	Corrosion allowance	0 [mm]	Design temperature	50 [°C]					
Mixer mounting position	Horizontal	Magnetic particle test (MT)	No	- [%]		Pickled & passivated	Yes		Insulation thickness	0 [mm]	Pd > 0.5 bar @ 1 design above normal atmospheric pressure	No, liquid					
Retain method elements	Removable	Ferrite measurement test (FT)	No	- [%]		Painting system	No		Volume mixer	0.6 [liter]	PED Fluidgroup	2					
Material marked	3.1, 3.1+ and 3.2 cert. only	Weld hardness test (HT)	No			Primer	No		Mass (empty)	4 [kg]	PED Category	Art. 3 Par.3					
		Positive Material Identification (PMI)	No			Intermediate coating	No		Mass (working condition)	- [kg]	PED Module	SEP					
		Painting adhesion test	No			Top coating	No				ATEX	N/A					
		Visual inspection	Yes	100 [%]		Final colour	-										



**PRE-ORDER DRAWING**

All mixer elements to be electro polished



Nozzles	Nominal diameter	Type	Medium	Range [mm]	Vessel length [mm]	Distance nozzle to reference line [mm]	Nozzle facing to reference line [mm]
N1 Inlet	NW40	DIN11851 liner	Chocolate	>30 - 120	± 3	± 2	± 3
N2 Outlet	NW40	DIN11851 liner	Mixture	>120 - 400	± 4	± 2	± 4
N3 Injector	NW25	Clamp DIN32676	Additives	>400 - 1000	± 6	± 3	± 6
N4 Inlet	1/2"	BSP(F)	Water	>1000 - 2000	± 8	± 4	
N5 Outlet	1/2"	BSP(F)	Water	>2000 - 4000	± 11	± 6	
				>4000 - 8000	± 14	± 8	
				>8000 - 12000	± 18	± 10	

Item no.	Description	Reference Standard	Material	Mat. Cert.	QTY.	Final Dimension	Weight
16	Equal socket	-	316	-	2	1/2" BSP(F)	0.06
15	Jacket closure	-	316L / 1.4404	2.2	2	Ø60.3/Ø41.2 t=2	0.02
14	Injector	-	316L / 1.4404	3.1	1	NW25 for pipe Ø29x1.5	0.32
13	Retention ring	-	316L / 1.4404	2.2	2	Ø43/Ø38 t=8	0.02
12	PMX element	-	316L / 1.4404	2.2	8	Ø38	0.04
11	Clamp heavy type	-	304L / 1.4307	-	1	NW25	0.10
10	Clamp gasket TC	-	NBR	-	1	NW25	0.00
9	Nut	DIN 11851	304L / 1.4307	-	2	NW40	0.18
8	Clamp liner (TC)	DIN 32676	316L / 1.4404	3.1	1	NW25 for pipe Ø29x1.5	0.06
7	Reducing Tee long	DIN 11852-TS	316L / 1.4404	3.1	1	DN40xDN25 (Ø41x1.5/Ø29x1.5)	0.18
6	Pipe	DIN 11850 Reihe 2	316L / 1.4404	3.1	1	Ø29x1.5 L=32	0.03
5	Pipe (spacer)	ASTM A-270	316L / 1.4404	3.1	1	Ø38.1x1.65 L=82	0.11
4	Pipe	Dutch dairy	316L / 1.4404	3.1	1	Ø63.5x1.5 L=438	1.01
3	Pipe	DIN 11850 Reihe 2	316L / 1.4404	3.1	1	Ø41x1.5 L=338	0.50
2	Welding liner	DIN 11851	316L / 1.4404	3.1	1	NW40 for pipe Ø41x1.5	0.12
1	Welding liner	DIN 11851	316L / 1.4404	3.1	1	NW40 for pipe Ø41x1.5	0.10

Drawn by: **MS**    Checked by: **RJW**    Approved by: **RJW**    Date: **31-1-2011**  
 Client reference: **201190048**    Project: **201190048**    Scale: **1:1.5**    Format: **A2**  
 Projection: **1st Angle**    Title: **JACKETED STATIC MIXER**  
 Drawing number: **PMX40-8-316L-DIN11851-INJ-JACK**    Sheet: **1/1**    Rev. No: **0**  
 Postbus 220, 3640 AE Mijdrecht, The Netherlands  
 T +31 (0)297-28 77 78    F +31 (0)297-28 60 30    E info@primix.eu    I www.primix.eu  
**PRIMIX**